

Clave



What is the Clave?

There are two meaning to the clave:

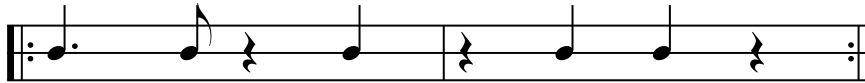
- 1) It is the "Key" to the rhythmic foundation on which Afro-Cuban music is based.
- 2) Clave also refers to a pair of short sticks. These sticks may be referred as "Claves". These sticks are stuck together to produce a rhythmic pattern.

Types of Clave

The Son Clave

The Son Clave has given birth to the Son Montuno, Guaracha, Mambo, Songo, and what we know today as Salsa, a term coined in New York City in the mid 70's to market this type of music to the world.

3-2 Son Clave



2-3 Son Clave



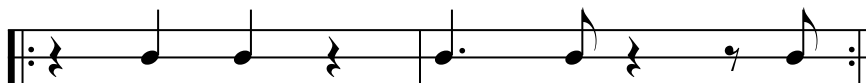
The Rumba Clave

This clave is called rumba clave because it is used in musical gatherings called rumbas. Rumbas are informal groups that combine African Drumming and Spanish or African vocal traditions with improvised dancing and singing.

3-2 Rumba Clave



2-3 Rumba Clave

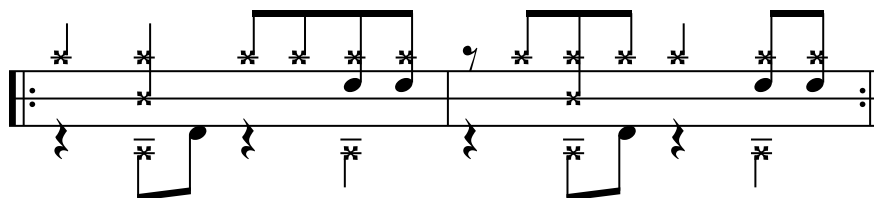
***Direction of the Clave***

Everything you play melodically and rhythmically must be in harmony with the Clave. The direction of the Clave is defined by the melody and it can either be a 3-2 or a 2-3 Clave.

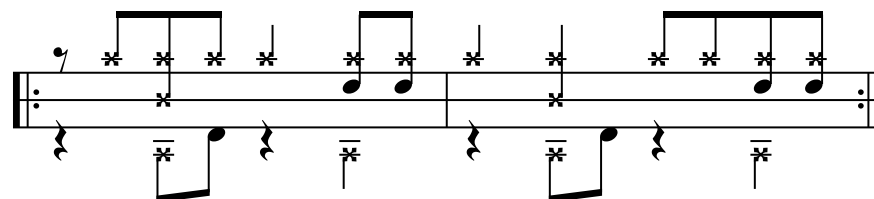
The Mambo

The Mambo is a popular Cuban dance rhythm that evolved from the Cuban Danzon (Dance). To understand Cuban music you must have an understanding of the Clave.

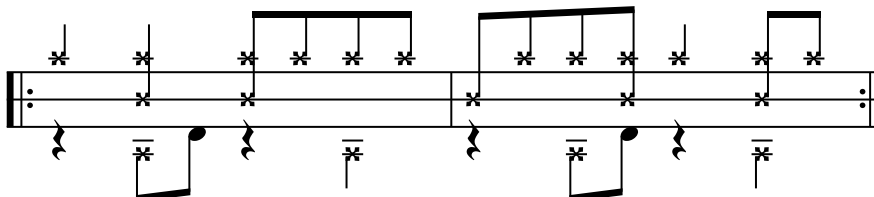
Mambo - 2-3 Son Clave



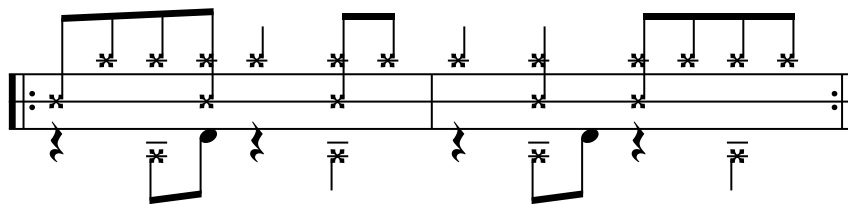
Mambo - 3-2 Son Clave



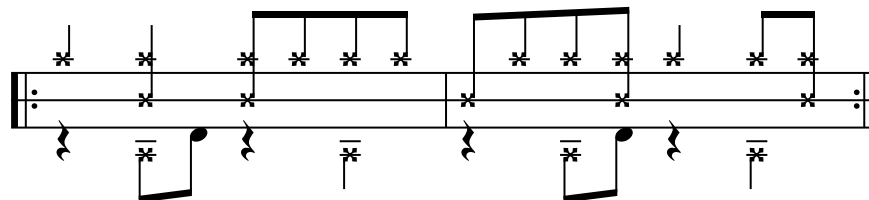
Mambo 2-3 Son Clave



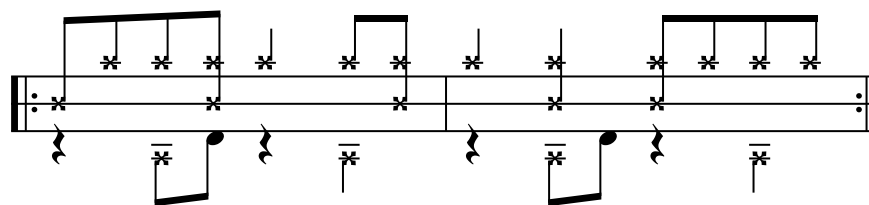
Mambo - 3-2 Son Clave



Mambo - 2-3 Rumba Clave



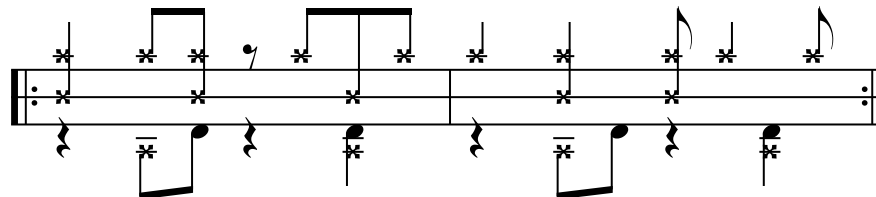
Mambo - 3-2 Rumba Clave



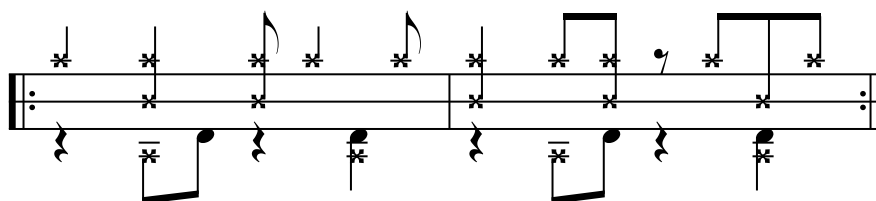
Cascara

Cascara is a pattern that is played on the Ride Cymbal or on the shell of the floor tom. The word cascara is a *spanish* word meaning shell.

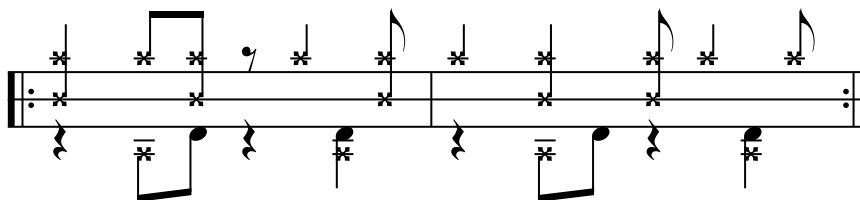
Mambo 3-2 with Cascara Pattern



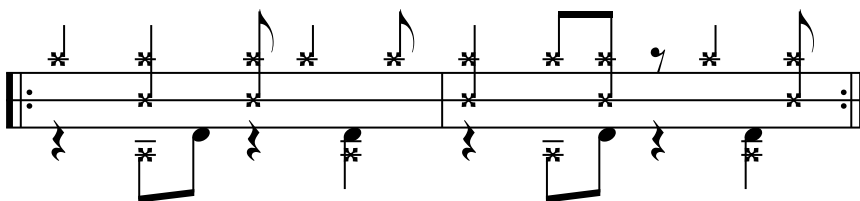
Mambo 2-3 with Cascara Pattern



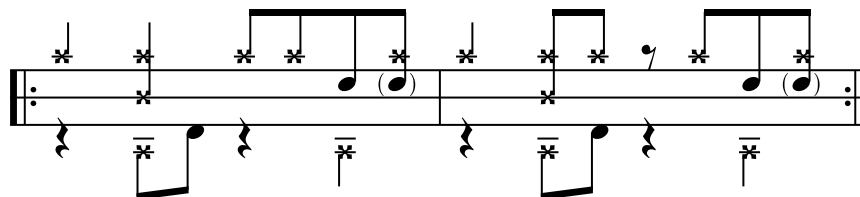
Mambo 3-2 Rumba Clave with Cascara Pattern



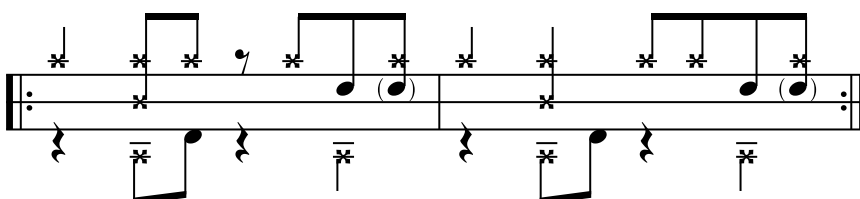
Mambo 2-3 Rumba Clave with Cascara Pattern



Mambo 2-3 Son or Rumba Clave with Cascara



Mambo 3-2 Son or Rumba Clave with Cascara



Additional BD and HH Patterns

