

HH	RC
SD	HT
BD	FT

RUDIMENTAL APPLICATIONS

DOUBLES - BEGINNER



R R L L R R L L R R L L R R L L



R R L L R R L L R R L L R R L L



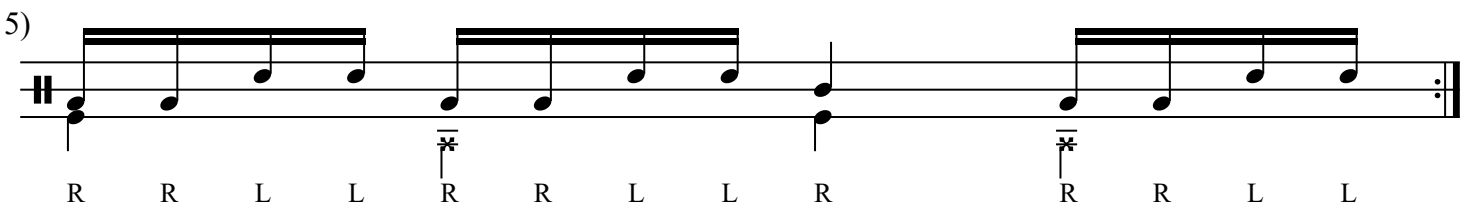
R R L L R R L L R R L L R R L L



L L R R L L R R L L R R L L R R



R R L L R R L L R R L L R R L L



R R L L R R L L R R L L R R L L



R R L L R R L L R R L L R R L L

7)

Musical notation for exercise 7, featuring a cymbal pattern (top staff) and a bass drum pattern (bottom staff).

8)

Musical notation for exercise 8, featuring a cymbal pattern (top staff) and a bass drum pattern (bottom staff).

9)

Musical notation for exercise 9, featuring a cymbal pattern (top staff) and a bass drum pattern (bottom staff).

10)

Musical notation for exercise 10, featuring a cymbal pattern (top staff) and a bass drum pattern (bottom staff).

11)

Musical notation for exercise 11, featuring a cymbal pattern (top staff) and a bass drum pattern (bottom staff).

12)

Musical notation for exercise 12, featuring a cymbal pattern (top staff) and a bass drum pattern (bottom staff).