

RC
TTSD
BD
HH

# Clave



## *What is the Clave?*

There are two meaning to the clave:

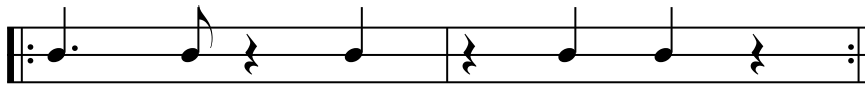
- 1) It is the "Key" to the rhythmic foundation on which Afro-Cuban music is based.
- 2) Clave also refers to a pair of short sticks. These sticks may be referred as "Claves". These sticks are stuck together to produce a rhythmic pattern.

## **Types of Clave**

### *The Son Clave*

The Son Clave has given birth to the Son Montuno, Guaracha, Mambo, Songo, and what we know today as Salsa, a term coined in New York City in the mid 70's to market this type of music to the world.

#### 3-2 Son Clave



#### 2-3 Son Clave



### *The Rumba Clave*

This clave is called rumba clave because it is used in musical gatherings called rumbas. Rumbas are informal groups that combine African Drumming and Spanish or African vocal traditions with improvised dancing and singing.

#### 3-2 Rumba Clave



## 2-3 Rumba Clave

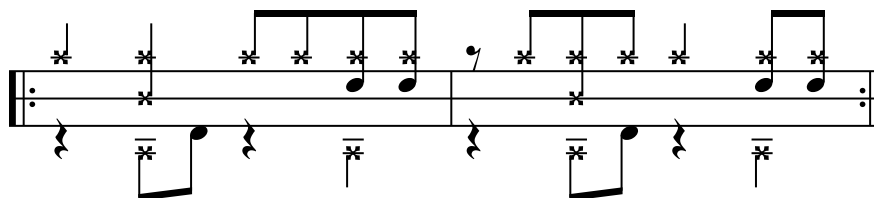
***Direction of the Clave***

Everything you play melodically and rhythmically must be in harmony with the Clave. The direction of the Clave is defined by the melody and it can either be a 3-2 or a 2-3 Clave.

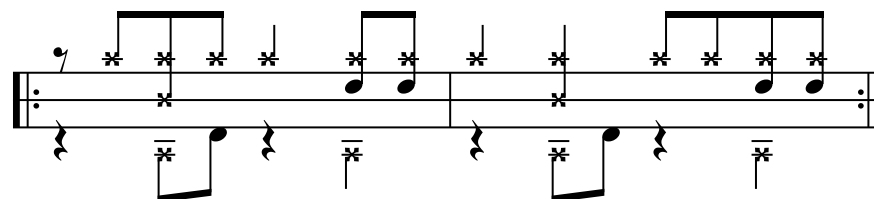
## The Mambo

The Mambo is a popular Cuban dance rhythm that evolved from the Cuban Danzon (Dance). To understand Cuban music you must have an understanding of the Clave.

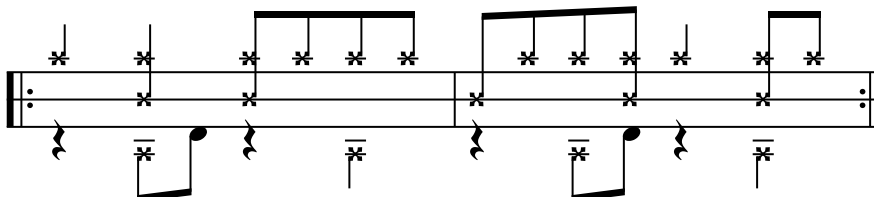
## Mambo - 2-3 Son Clave



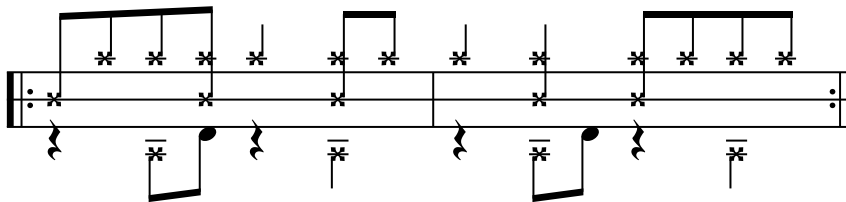
## Mambo - 3-2 Son Clave



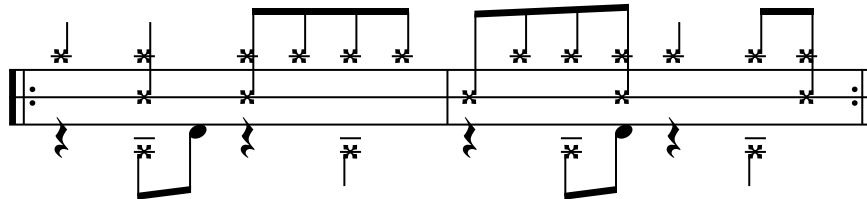
## Mambo 2-3 Son Clave



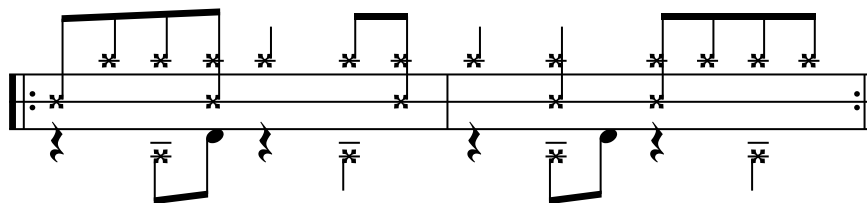
## Mambo - 3-2 Son Clave



## Mambo - 2-3 Rumba Clave



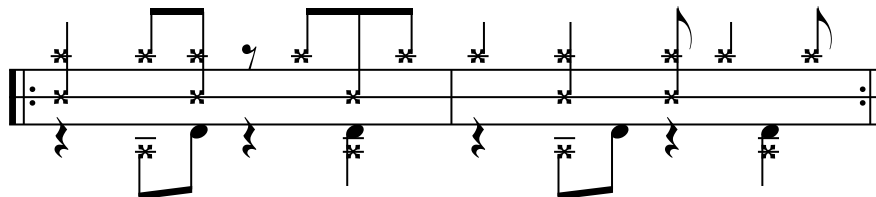
## Mambo - 3-2 Rumba Clave



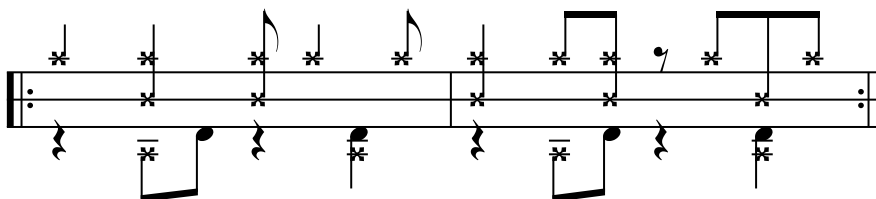
## Cascara

Cascara is a pattern that is played on the Ride Cymbal or on the shell of the floor tom. The word cascara is a *spanish* word meaning shell.

## Mambo 3-2 with Cascara Pattern



## Mambo 2-3 with Cascara Pattern



## Mambo 3-2 Rumba Clave with Cascara Pattern

Musical notation for Mambo 3-2 Rumba Clave with Cascara Pattern. The notation consists of two staves. The top staff shows a sequence of notes with asterisks above them, representing the Cascara pattern. The bottom staff shows a sequence of notes with asterisks below them, representing the Rumba Clave pattern. The notation is enclosed in a double bar line with repeat dots at both ends.

## Mambo 2-3 Rumba Clave with Cascara Pattern

Musical notation for Mambo 2-3 Rumba Clave with Cascara Pattern. The notation consists of two staves. The top staff shows a sequence of notes with asterisks above them, representing the Cascara pattern. The bottom staff shows a sequence of notes with asterisks below them, representing the Rumba Clave pattern. The notation is enclosed in a double bar line with repeat dots at both ends.

## Mambo 2-3 Son or Rumba Clave with Cascara

Musical notation for Mambo 2-3 Son or Rumba Clave with Cascara. The notation consists of two staves. The top staff shows a sequence of notes with asterisks above them, representing the Cascara pattern. The bottom staff shows a sequence of notes with asterisks below them, representing the Son or Rumba Clave pattern. The notation is enclosed in a double bar line with repeat dots at both ends.

## Mambo 3-2 Son or Rumba Clave with Cascara

Musical notation for Mambo 3-2 Son or Rumba Clave with Cascara. The notation consists of two staves. The top staff shows a sequence of notes with asterisks above them, representing the Cascara pattern. The bottom staff shows a sequence of notes with asterisks below them, representing the Son or Rumba Clave pattern. The notation is enclosed in a double bar line with repeat dots at both ends.

## Additional BD and HH Patterns

Musical notation for Additional BD and HH Pattern 1. The notation consists of a single staff with a double bar line and repeat dots at both ends. The staff contains a sequence of notes with asterisks below them, representing a pattern for the Bass Drum (BD) and Hi-Hat (HH).

Musical notation for Additional BD and HH Pattern 2. The notation consists of a single staff with a double bar line and repeat dots at both ends. The staff contains a sequence of notes with asterisks below them, representing a pattern for the Bass Drum (BD) and Hi-Hat (HH).