

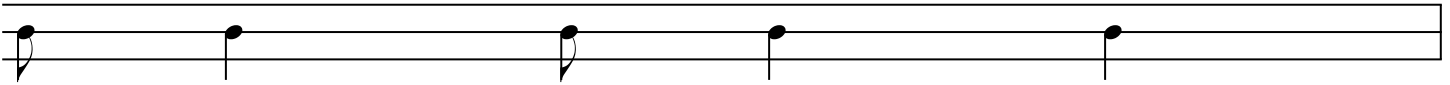
RC
SD
BD
HH

FILL EX IN SYNCOPATION (TRIPLETS) PG 30-45

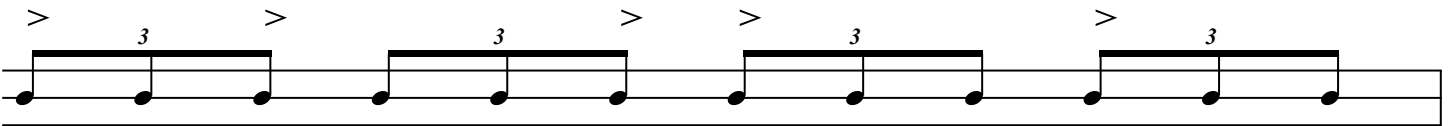


TODAY WE WILL BE DOING ANOTHER FILL EX USING SYNCOPATION BY TED REED. ALTERNATE TRIPLETS ACCENTING THE MELODY ON EITHER THE SNARE DRUM OR TOMS (RIGHT HAND = FLOOR TOM, LEFT HAND = HIGH TOM). BELOW IS AN EXAMPLE FOUND ON PAGE 34.

PAGE 34 OF SYNCOPATION BY TED REED



ALTERNATE 16TH NOTES - ACCENTING THE MELODY ON THE SD



MOVE THE ACCENTED NOTES TO EITHER THE SMALL TOM OR THE FLOOR TOM

