

RC
SD
BD
HH

JAZZ COMPING EX

SYNCOPATION COMPING EX PG 30-45

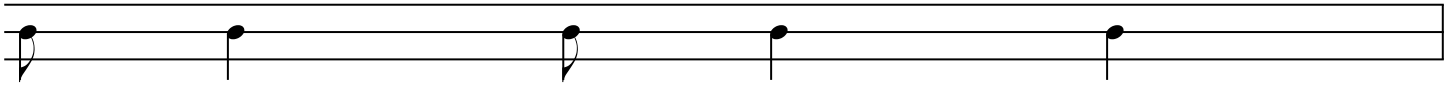
ALTERNATE BETWEEN SNARE AND HI-HAT



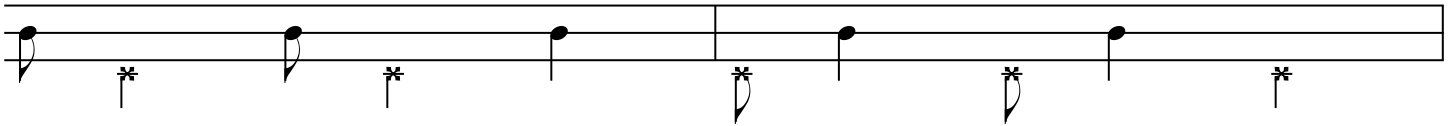
TODAY WE WILL BE LOOKING AT SOME COMPING PATTERNS THAT CAN BE APPLIED IN A JAZZ SETTING USING THE BOOK SYNCOPATION BY TED REED. WE ARE GOING TO ALTERNATE BETWEEN THE SNARE DRUM AND HI HAT.

BELOW IS AN EXAMPLE FOUND ON PAGE 34.

PAGE 34 OF SYNCOPATION BY TED REED



8TH ON SD/QUARTERS ON HI-HAT



WITH RIDE CYMBAL

