

RC  
SD  
BD  
HH

# JAZZ COMPING EX

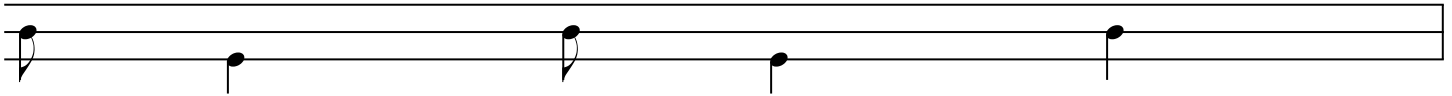
## SYNCOPATION COMPING EX PG 30-45

### ALTERNATE BETWEEN SNARE AND BASS

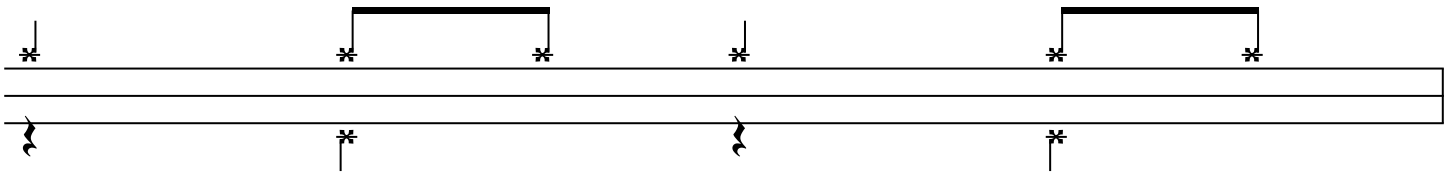


TODAY WE WILL BE LOOKING AT SOME COMPING PATTERNS THAT CAN BE APPLIED IN A JAZZ SETTING USING THE BOOK SYNCOPATION BY TED REED. WE ARE GOING TO ALTERNATE BETWEEN THE SNARE DRUM AND THE BASS DRUM. BELOW IS AN EXAMPLE FOUND ON PAGE 34.

PAGE 34 OF SYNCOPATION BY TED REED



TRADITIONAL RIDE CYMBAL PATTERN



COMBINED RHYTHM

